

ANDREW SHAW

height 6'2" · bust 39" · waist 32" · hips 38" · suit 50
shoes size 45 EU/13.5 US/9.5 UK · hair brown · eyes brown



ANDREW SHAW

height 6'2" · bust 39" · waist 32" · hips 38" · suit 50
shoes size 45 EU/13.5 US/9.5 UK · hair brown · eyes brown

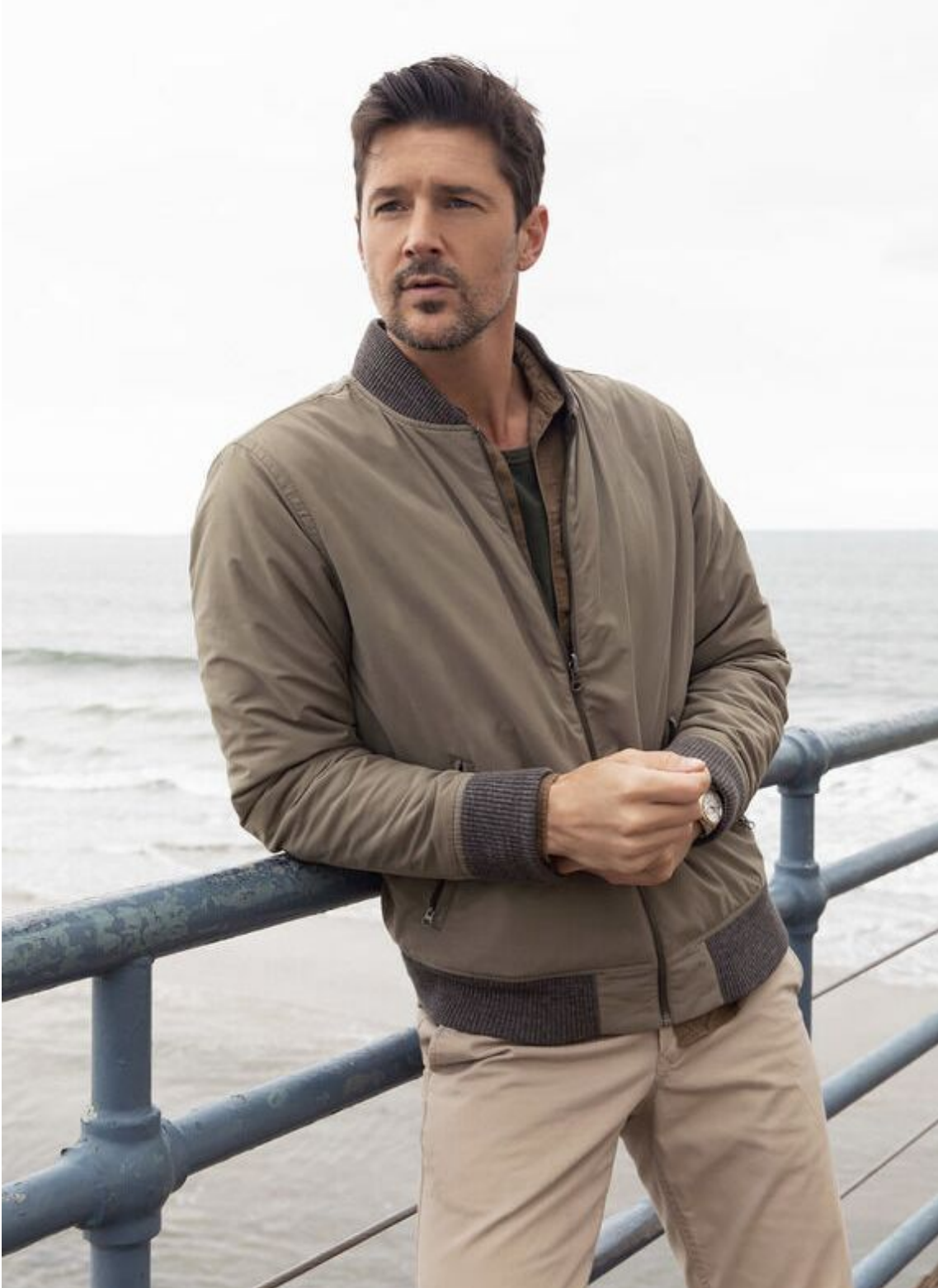


MGM
MODELS

MGM
MODELS

ANDREW SHAW

height 6'2" · bust 39" · waist 32" · hips 38" · suit 50
shoes size 45 EU/13.5 US/9.5 UK · hair brown · eyes brown



ANDREW SHAW

height 6'2" · bust 39" · waist 32" · hips 38" · suit 50
shoes size 45 EU/13.5 US/9.5 UK · hair brown · eyes brown

Vintage Appeal

Cut in a structured, vintage-inspired denim, these are jeans you'll wear from fall to winter, east to west, country to city.

CHARISMA IN
RINSE VINTAGE
— \$190

28 34HERITAGE.COM | 844.200.3434

MGM
MODELS

ANDREW SHAW

height 6'2" · bust 39" · waist 32" · hips 38" · suit 50
shoes size 45 EU/13.5 US/9.5 UK · hair brown · eyes brown



COURAGE IN
GREY CHECKED
— \$196

FREE SHIPPING & RETURNS 13

ANDREW SHAW

height 6'2" · bust 39" · waist 32" · hips 38" · suit 50
shoes size 45 EU/13.5 US/9.5 UK · hair brown · eyes brown

Denim Heroes

We like to think of our jeans as a lesson in form meets function. Robust rinses and understated hardware deliver on form, while premium fabrication, comfortable fit and high-stretch capability provide top-notch function for a modern life.

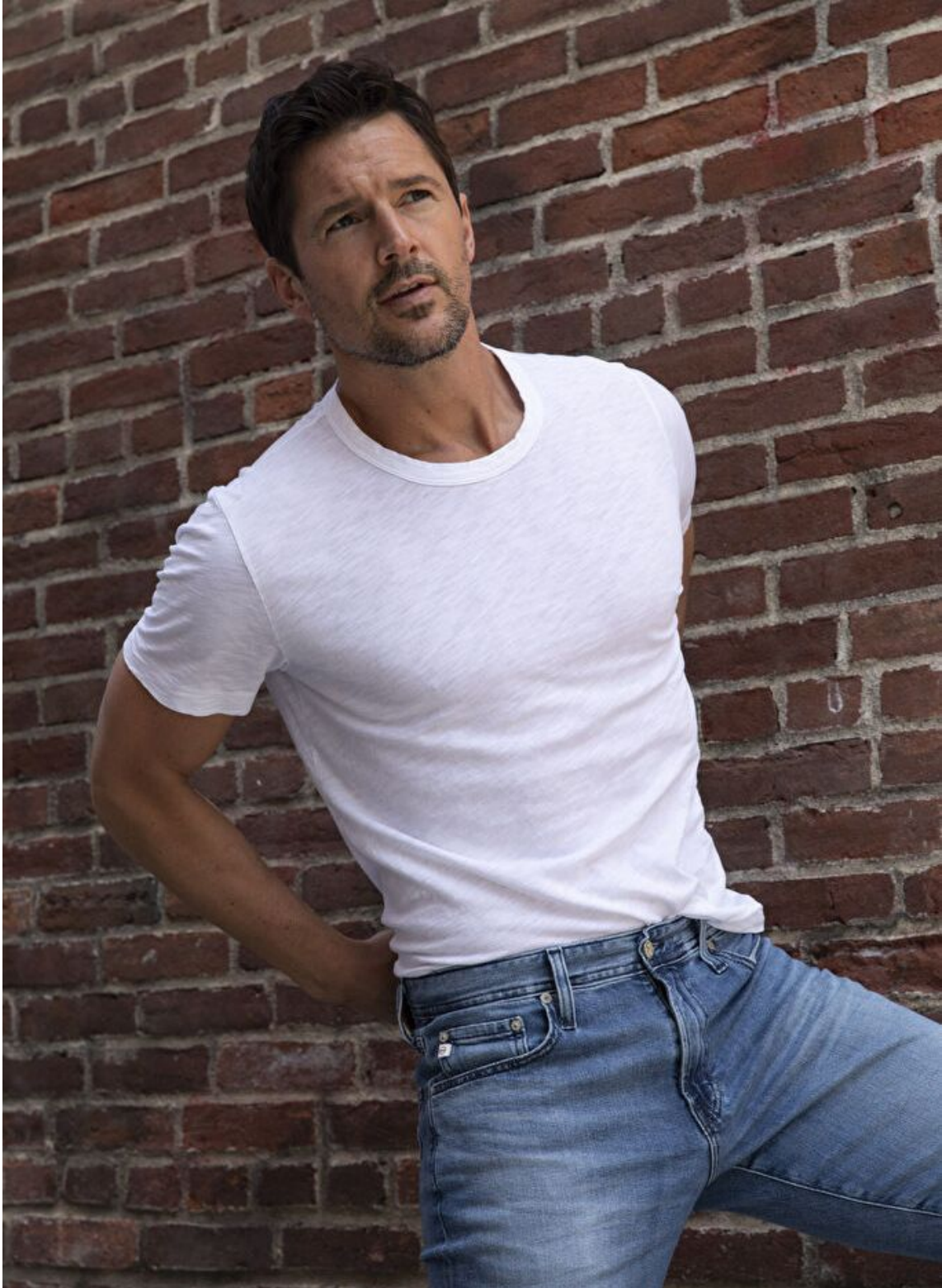
CHARISMA IN
MID CASHMERE
— \$185

34 34HERITAGE.COM | 844.200.3434

MGM
MODELS

ANDREW SHAW

height 6'2" · bust 39" · waist 32" · hips 38" · suit 50
shoes size 45 EU/13.5 US/9.5 UK · hair brown · eyes brown



ANDREW SHAW

height 6'2" · bust 39" · waist 32" · hips 38" · suit 50
shoes size 45 EU/13.5 US/9.5 UK · hair brown · eyes brown



MGM
MODELS

MGM
MODELS

ANDREW SHAW

height 6'2" · bust 39" · waist 32" · hips 38" · suit 50
shoes size 45 EU/13.5 US/9.5 UK · hair brown · eyes brown



ANDREW SHAW

height 6'2" · bust 39" · waist 32" · hips 38" · suit 50
shoes size 45 EU/13.5 US/9.5 UK · hair brown · eyes brown



ANDREW SHAW

height 6'2" · bust 39" · waist 32" · hips 38" · suit 50
shoes size 45 EU/13.5 US/9.5 UK · hair brown · eyes brown



ANDREW SHAW

height 6'2" · bust 39" · waist 32" · hips 38" · suit 50
shoes size 45 EU/13.5 US/9.5 UK · hair brown · eyes brown



ANDREW SHAW

height 6'2" · bust 39" · waist 32" · hips 38" · suit 50
shoes size 45 EU/13.5 US/9.5 UK · hair brown · eyes brown



SWEDISH MILITARY PARKA

From uniform to unique: we've replicated an old-school field coat used by the Swedish military, tightening the fit and turning it into a distinctively cool piece of modern outerwear. The Italian cotton-nylon fabric brushed to fortify this piece against the elements. Authentically vintage feel. Features a double storm flap with military-style buttons at center front, felled seams, adjustable cuffs, interior drawcords at waist and hood, and scalloped three-button flaps on the waist pockets. 70% cotton, 30% nylon. Orange only. Sizes 36-48, even only. **G1473 / \$398**

35 *GUIDEBEAT Co.*

ANDREW SHAW

height 6'2" · bust 39" · waist 32" · hips 38" · suit 50
shoes size 45 EU/13.5 US/9.5 UK · hair brown · eyes brown



GUIDEBOAT Co.

Holiday 2020

MGM
MODELS

ANDREW SHAW

height 6'2" · bust 39" · waist 32" · hips 38" · suit 50
shoes size 45 EU/13.5 US/9.5 UK · hair brown · eyes brown

TETON SPORT PANT

Outdoor-adventure trousers never looked this good. The tailored fit of this superior active pant leaves the wearer enough room for athletic maneuvers. The premium grosgrain fabric—a breathable Japanese cotton-nylon blend—is densely woven for anti-weather armoring, and yet has a soft, natural hand. Featuring articulated leg panels and seams, welted button pockets in rear, and heat-resistant melamine buttons. Unelasticized waistband with belt loops, phone pocket at side seam. Garment-washed for comfort. 60% cotton, 40% nylon. Adriatic, Driftwood, or Olive (on model). Sizes 30-34; 36 & 38. G1500 / \$185



1 (888) 488-1661 GUIDEPAT.COM 32

ANDREW SHAW

height 6'2" · bust 39" · waist 32" · hips 38" · suit 50
shoes size 45 EU/13.5 US/9.5 UK · hair brown · eyes brown



ANDREW SHAW

height 6'2" · bust 39" · waist 32" · hips 38" · suit 50
shoes size 45 EU/13.5 US/9.5 UK · hair brown · eyes brown



ANDREW SHAW

height 6'2" · bust 39" · waist 32" · hips 38" · suit 50
shoes size 45 EU/13.5 US/9.5 UK · hair brown · eyes brown



ANDREW SHAW

height 6'2" · bust 39" · waist 32" · hips 38" · suit 50
shoes size 45 EU/13.5 US/9.5 UK · hair brown · eyes brown



ANDREW SHAW

height 6'2" · bust 39" · waist 32" · hips 38" · suit 50
shoes size 45 EU/13.5 US/9.5 UK · hair brown · eyes brown



MGM
MODELS

MGM
MODELS

ANDREW SHAW

height 6'2" · bust 39" · waist 32" · hips 38" · suit 50
shoes size 45 EU/13.5 US/9.5 UK · hair brown · eyes brown

